

The Panmure

4 Bedroom | 3 Bathroom | Detached



This quality detached property provides a spacious family home in a popular location.

This desirable detached home contains 4 bedrooms all with built in wardrobes. The public rooms have been tastefully designed and offer spacious living accommodation on the ground floor.

The open plan Kitchen/Dining has an island unit which is perfect for entertaining. The property also benefits from a utility room and 3 wet rooms including 2 showers. Ample parking for 3 cars is also provided.



Why choose D J Laing Homes?

9. **Supporting Local Businesses:** As an employer we support local tradesmen and suppliers which benefits the local economy.
10. **Environmentally Friendly:** Our aim is to segregate site waste and increase recycling to reduce the carbon footprint.



Contact our team

Call us on
0845 257 2290

Email
homes@djlaing.co.uk

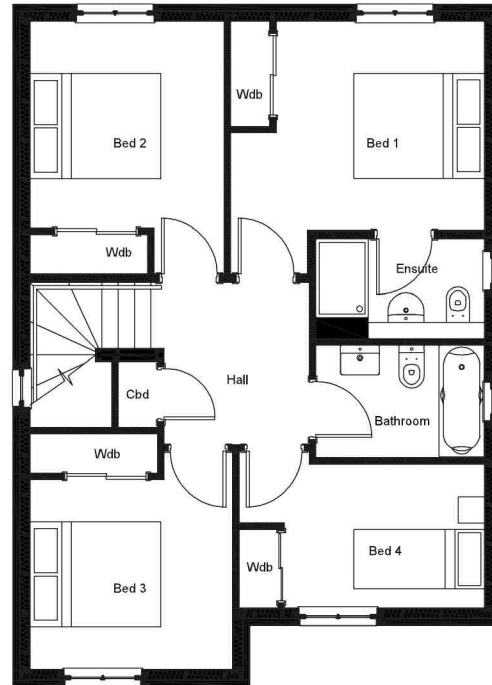
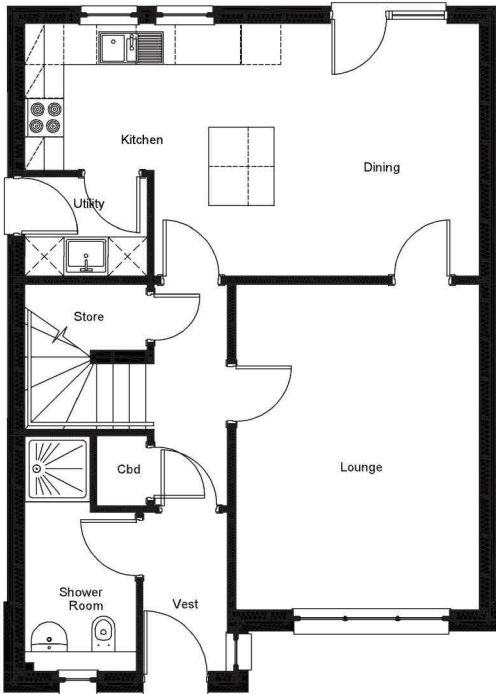
Visit us online at
www.djlaing.co.uk/homes

The Panmure

4 Bedroom | 3 Bathroom | Detached



Floor Plans



Ground Floor

| Room | Sizes (m) | Sizes (f) |
|---------|-----------|---------------|
| Lounge | 4.9 x 3.7 | 16'3" x 12'2" |
| Dining | 3.8 x 3.1 | 12'8" x 10'2" |
| Kitchen | 2.2 x 3.8 | 7'4" x 12'4" |
| Utility | 1.5 x 1.9 | 5'0" x 6'2" |
| Shower | 2.4 x 1.7 | 8'0" x 5'7" |

First Floor

| Room | Sizes (m) | Sizes (f) |
|-----------|-----------|---------------|
| Bedroom 1 | 3.2 x 3.2 | 10'5" x 10'5" |
| Ensuite | 1.5 x 2.6 | 5'0" x 8'5" |
| Bedroom 2 | 3.2 x 3.0 | 10'5" x 9'9" |
| Bedroom 3 | 2.9 x 3.1 | 9'6" x 10'2" |
| Bedroom 4 | 2.2 x 3.1 | 7'3" x 10' |
| Bathroom | 1.7 x 2.6 | 5'7" x 8'5" |

Whilst correct at the time of printing, the information contained within this brochure is for guidance only. Although every care has been taken to ensure the accuracy of the information, D J Laing Homes Limited reserves the right to improve or amend the layout and specification without prior notification. The contents, therefore, do not constitute an offer or form part of any contract. All room sizes are approximate.

Contact our team

Call us on
0845 257 2290

Email
homes@djlaing.co.uk

Visit us online at
www.djlaing.co.uk/homes